



# SWS – Morning Coffee

11.3.2021 09:00-10.30

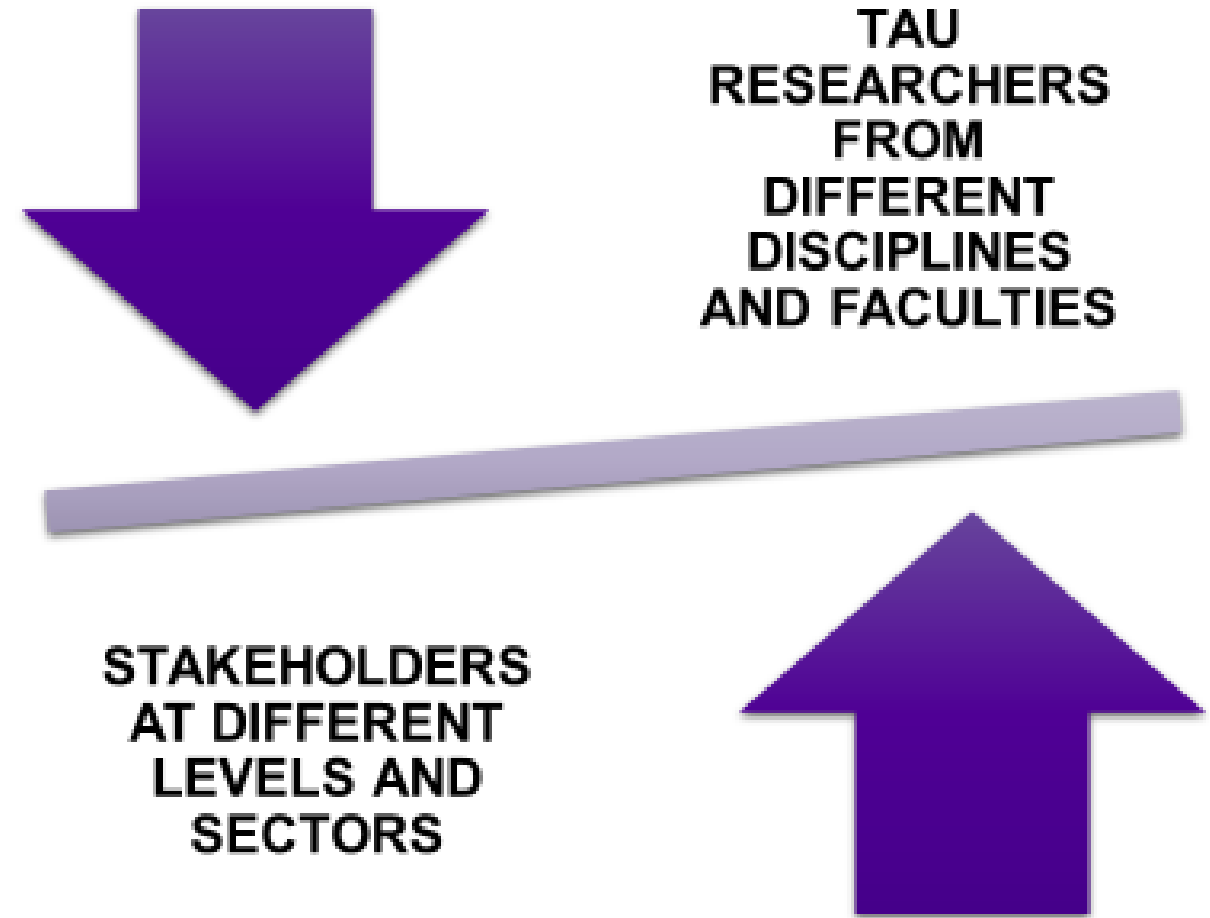
*Conflicts in welfare systems  
and interdisciplinary research?*



**Zoom session**

## Thematic groups bring together researchers and other societal actors

Themes were identified  
by hearing both  
researchers and  
representatives from  
policy, politics and  
service system



# SWS themes



## Mechanisms of effectiveness:

- The role of information in developing sustainable welfare systems
- Implementation of effective policies, services and supporting practices



## Politics of sustainable welfare and welfare systems:

- Participation
- Legitimacy
- Democracy
- Civil society



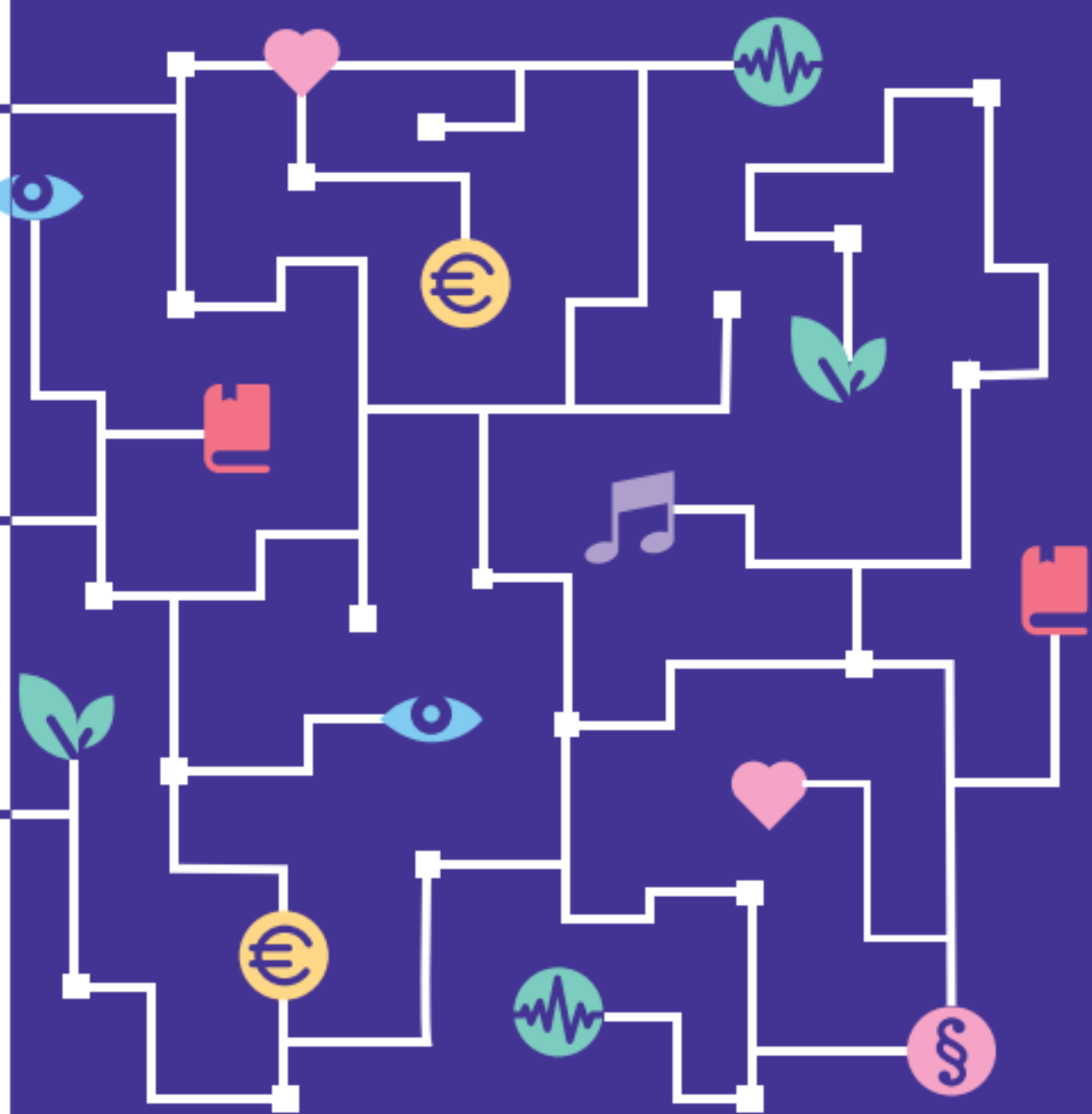
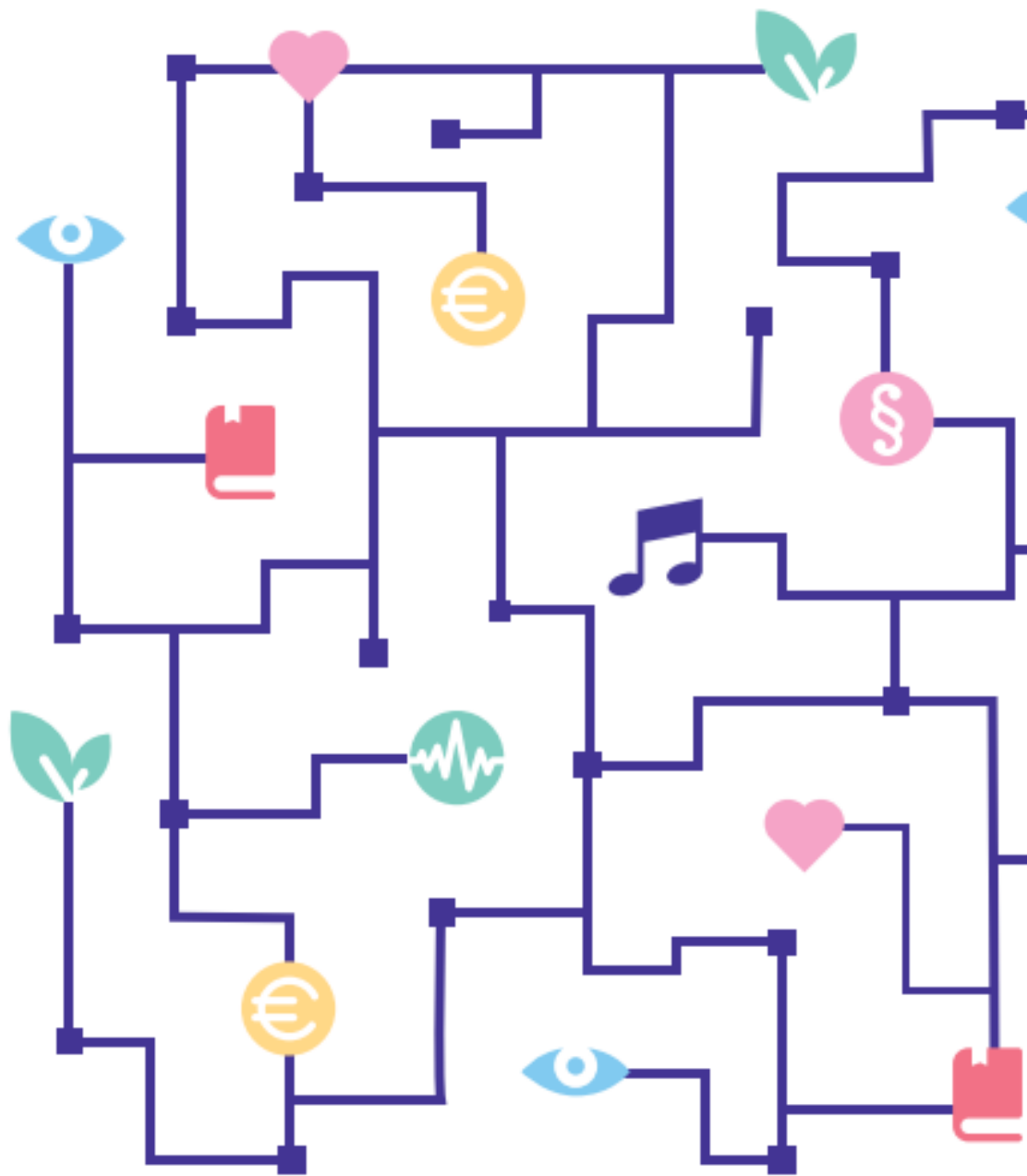
## Governing the sustainable:

- multi-actor, multi-level, multi-sectoral interaction and integration in welfare systems

**Interpretations and implementation of sustainability in welfare systems –  
conflicts, synergies and compatibility**

# How to proceed with the themes?

- Is it a good idea to use more focused themes as one tool to take the SWS program forward?
  - What kind of research interests and on-going projects could be linked to the themes?
- Are you interested to promote or advance the themes?
  - What kind of activities you would like to have under the themes? (e.g. Reading circles...? Joint funding applications...? Book projects...? ...etc.)
- Who would be the relevant or interesting partners to work with (inside and outside the academia)
- Is something missing?



# **Paula Rossi: Emerging connections between conflicts and sustainability**