



SWS Morning Coffee

4.2.2021 at 9:00

Welcome!



Research Program

- Tampere University's *profiling initiative* funded by the AoF 2019-2023
- Emerging research are of "Future of Wellbeing"
 - Health and welfare systems research
- Multidisciplinarity and phenomenon based collaboration
 - Within TAU and with other actors
 - Everyone is welcome to participate!
 - Different instruments from salaried positions to seed-funding and starting grants

The aims of SWS



STRENGTHEN

Strengthen TAU's research profile on health and welfare systems research

PROVIDE

Provide an arena in which people from *health*, *society* and *technology* can come together and make new connections

PRODUCE

Produce high scientific quality and policy-relevant research

DEVELOP

Develop new ways of working across disciplinary and organizational boundaries

EXPAND

Expand beyond the academia by reaching out to the society

SWS people

Board

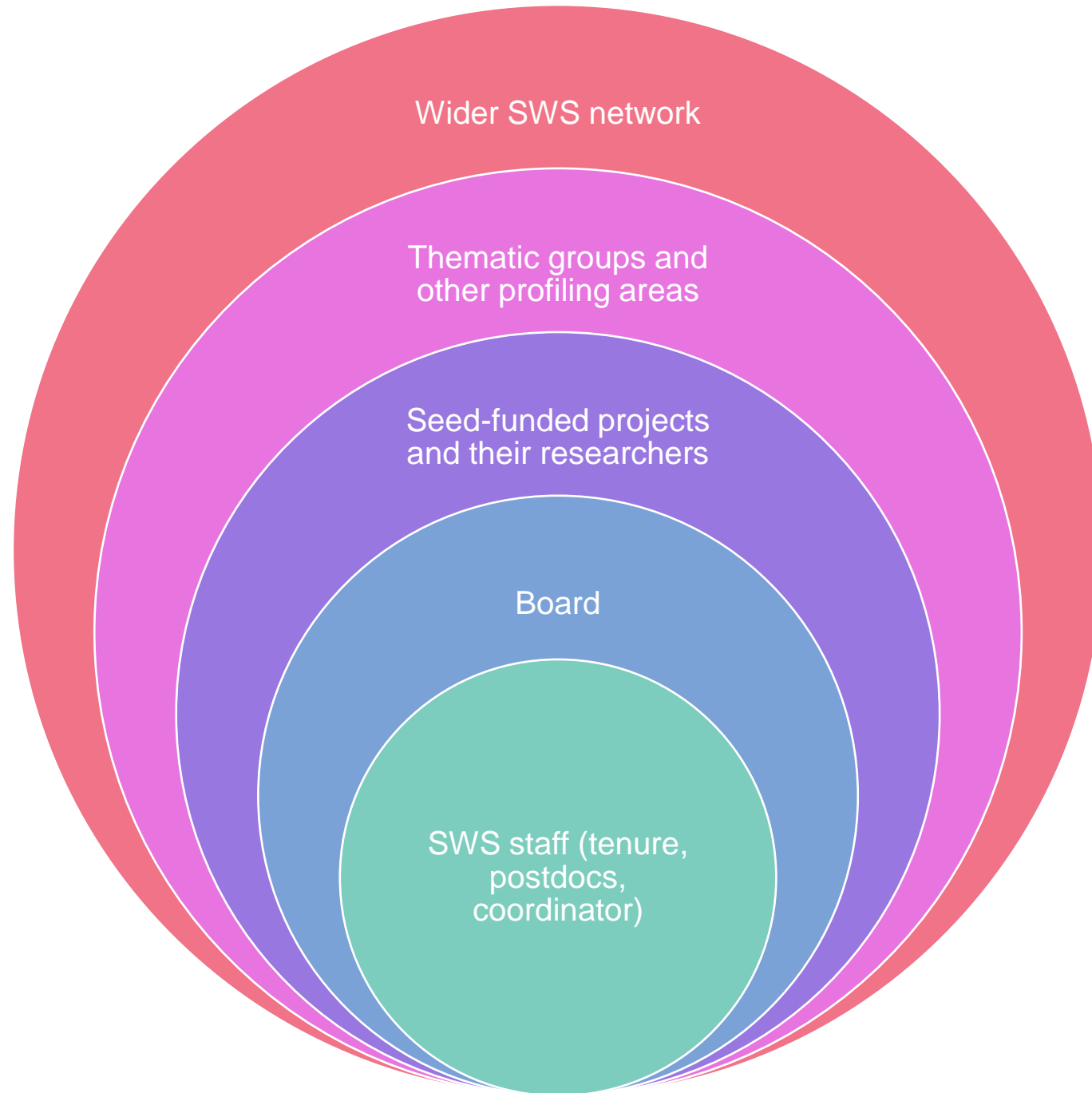
- Vice President for Research Juha Teperi, chair
- Dean Juho Saari (SOC)
- Dean Tapio Visakorpi (MET)
- Professor of Practice Elli Aaltonen (SOC)
- Professor Arto Haveri (MAB)
- Professor Nina Helander (MAB)
- Professor Laura Kalliomaa-Puha (SOC)
- Principal lecturer Nina Kilkku (TAMK)
- Professor Kaisa Kotakorpi (MAB)
- Professor Joni Kämäräinen (ITC)

Funded positions

- Liina-Kaisa Tynkkynen, Assist.Prof. (tenure track)
- Nadja Nordling, Research coordinator
- Matias Heikkilä, Research coordinator (parental leave substitute)
- **Postdoctoral researchers**
 - Dr. Anna-Aurora Kork
 - Dr. Anni Jänntti

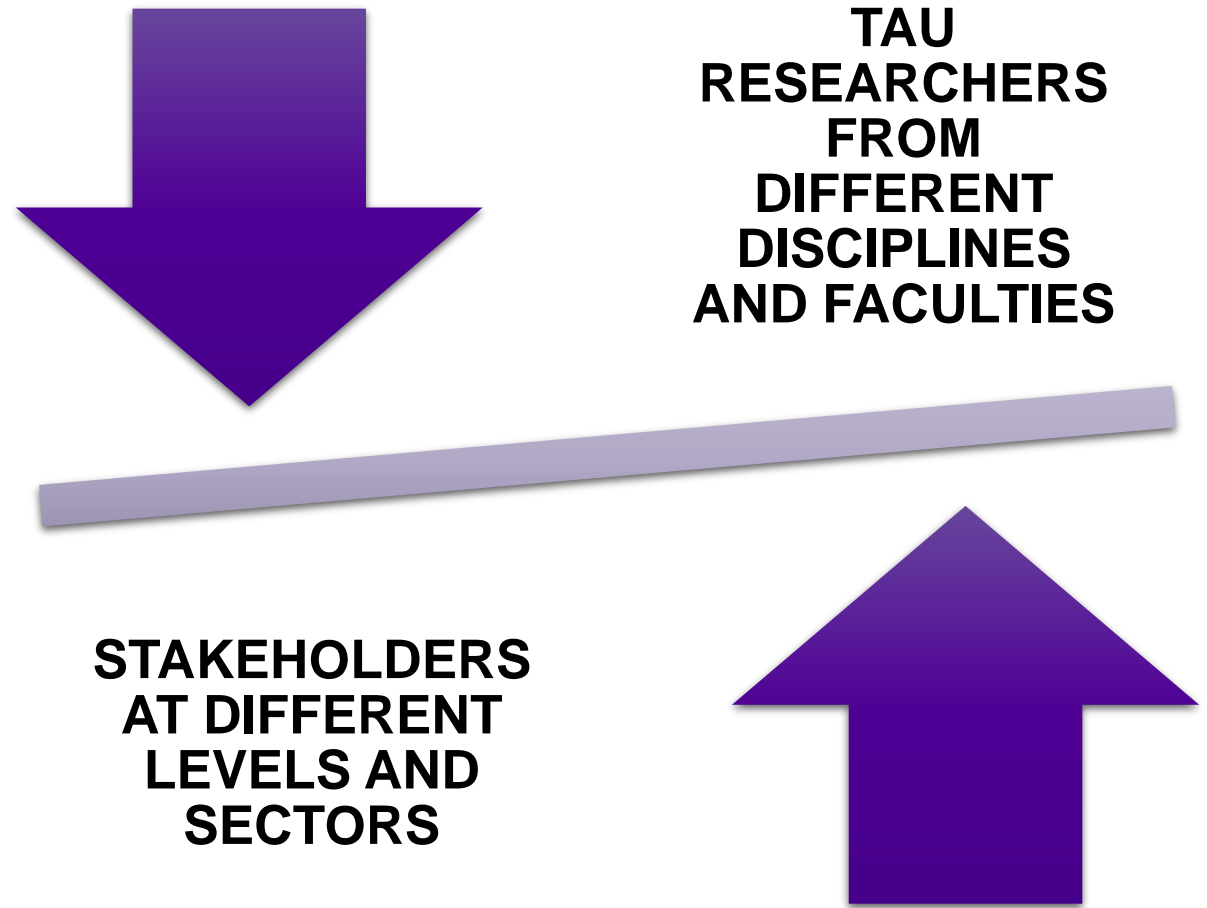
All researchers at TAU

- Seed-funded projects
- Thematic groups
- Researchers interested in participating



Thematic groups bring together researchers and other societal actors

Themes were identified
by hearing both
researchers and
representatives from
policy, politics and
service system



Tentative Themes

- Conflicts in sustainability (ecological, social, economic)
- Citizenship, democracy, participation
- Digitalization, care innovations
- Integration, care pathways
- Leadership, change management
- Cross sectoral collaboration, multiprofessionality
- Use of data, information & knowledge
- Effectiveness and impact evaluation
- Customer orientation, patient value
- Social and regional equity

Year 2021 – What's been planned so far

- Morning coffees once a month
 - Next morning coffee session will be held on 11 March 2021
- Seed-funding call is open (dl 8.2.2021)
 - Projects become part of SWS
- Making it more focused and establishing thematic groups (researchers and stakeholders)
- Roundtable discussions with high-level representatives from key organisations continue
- 18 – 20 May 2021 The Nordic network for Health Policy, Health Management, and Health Services Research (online)

Tell us your ideas and wishes!