



FHAIVE Open Office

Puzzles, Hope, Discoveries

Navigating the PhD Odyssey

15.11.2023

HOW TO GET INTO A PHD



GET A MASTER
DEGREE



UNIVERSITY
APPROVED



PASS THE INTERVIEW AND
AGREE WITH SUPERVISOR

HOW TO GET THE PHD



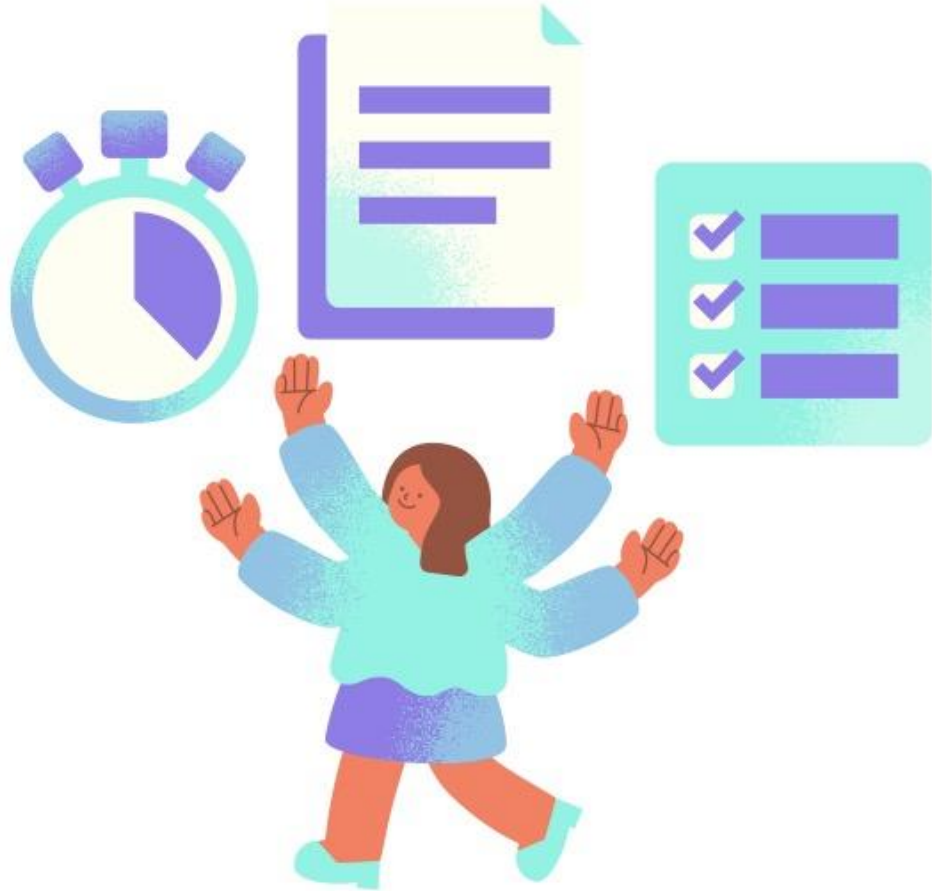
PAPERS

Three first author papers
but more are well accepted

CREDITS

40 credits from exams,
conferences, teaching...

HOW TO GET THE PHD



YOU CAN COUNT ON THE SUPPORT OF

Your supervisor

Your co-supervisor if any

A follow-up committee (2+)

HOW THE STUDIES ARE FUNDED



HOW TO DO A PHD AT



To get your PhD with us, you don't need to be an expert!

But you need the attitude to become *one*.



GETTING A PROJECT AT FHAIVE



nanosafety
FAIR data
NAMS
ssbd
data curation
data preprocessing
in vitro models
hazard assessment
standardised methods
GLP
chemical safety
AOP
biomarkers
data integration
microarray
ENMs
multi-omics
toxicogenomics
One health
toxicoepigenomics
motif analysis
biological systems
data driven
methylation
system biology
bio-env interaction
approached
network theory
network toxicology
knowledge graph
network pharmacology
immunotoxicity
knowledge learning
AI
drug discovery
lung fibrosis
drug repurposing
skin diseases
drug design
Covid-19

GETTING YOUR PROJECT AT FHAIVE



Freedom is related to satisfaction and an important project characteristic for doctoral **success**

AS A PHD YOU LEARN HOW TO HANDLE PROJECTS

01

DEFINE PROJECT SCOPE

Your project should start with a clear statement of overall goals

02

TIME MANAGEMENT

Break down what actions you need to take to achieve each goal.

03

ADD VALUE, NOT EXPERIMENTS

As a graduate student, you have limited time and, often, limited resources

04

DEFINE METRIC OF PROGRESS

if you're wrong about a key assumption in your project design, you'll want to know as soon as possible



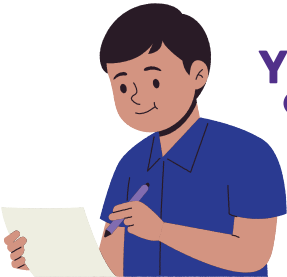
HOW DO WE HANDLE PROJECTS AT FHAIVE

someone else's expertise

INTERACTION

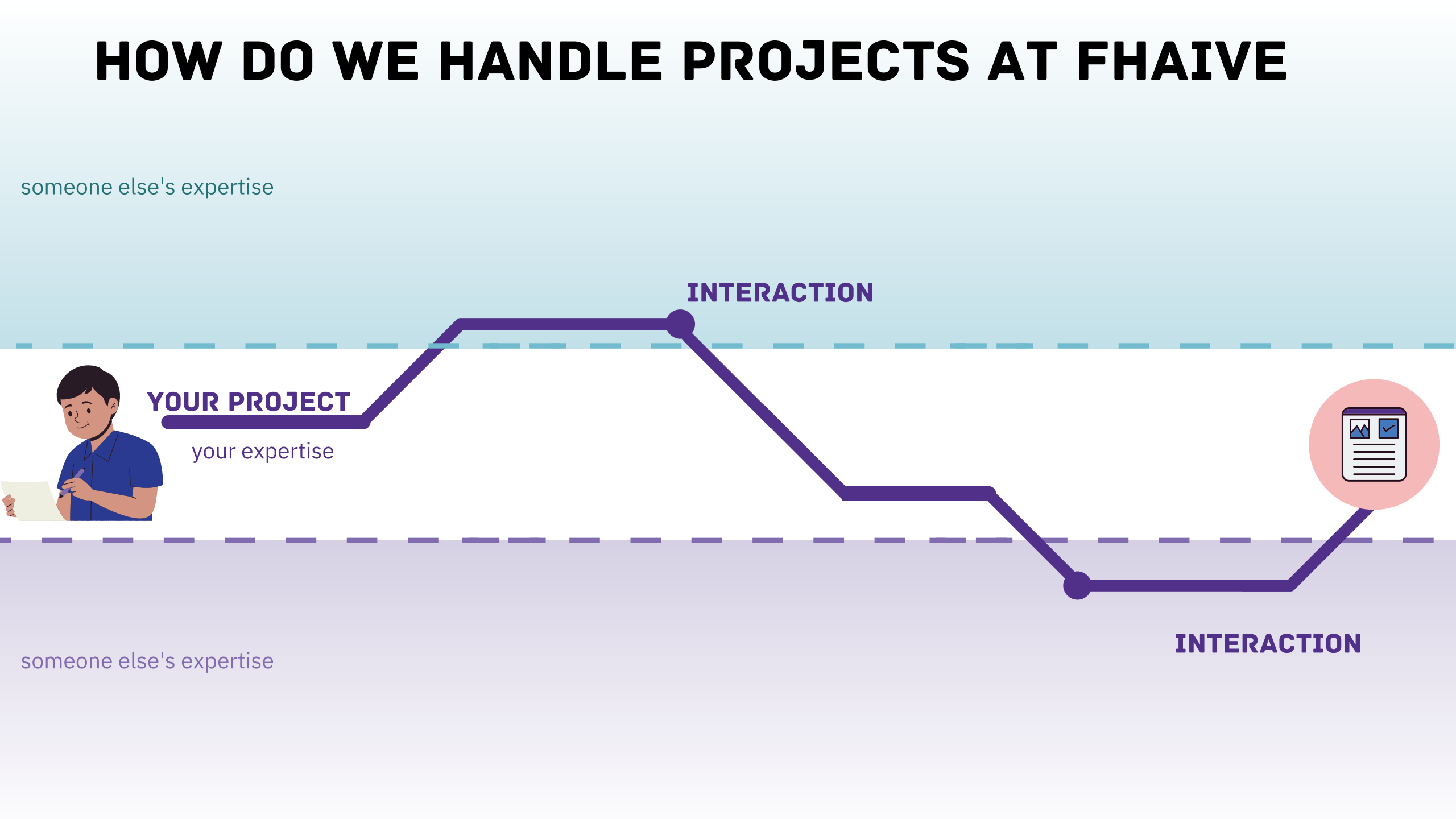
YOUR PROJECT

your expertise



INTERACTION

someone else's expertise



HOW DO WE HANDLE PROJECTS AT FHAIVE

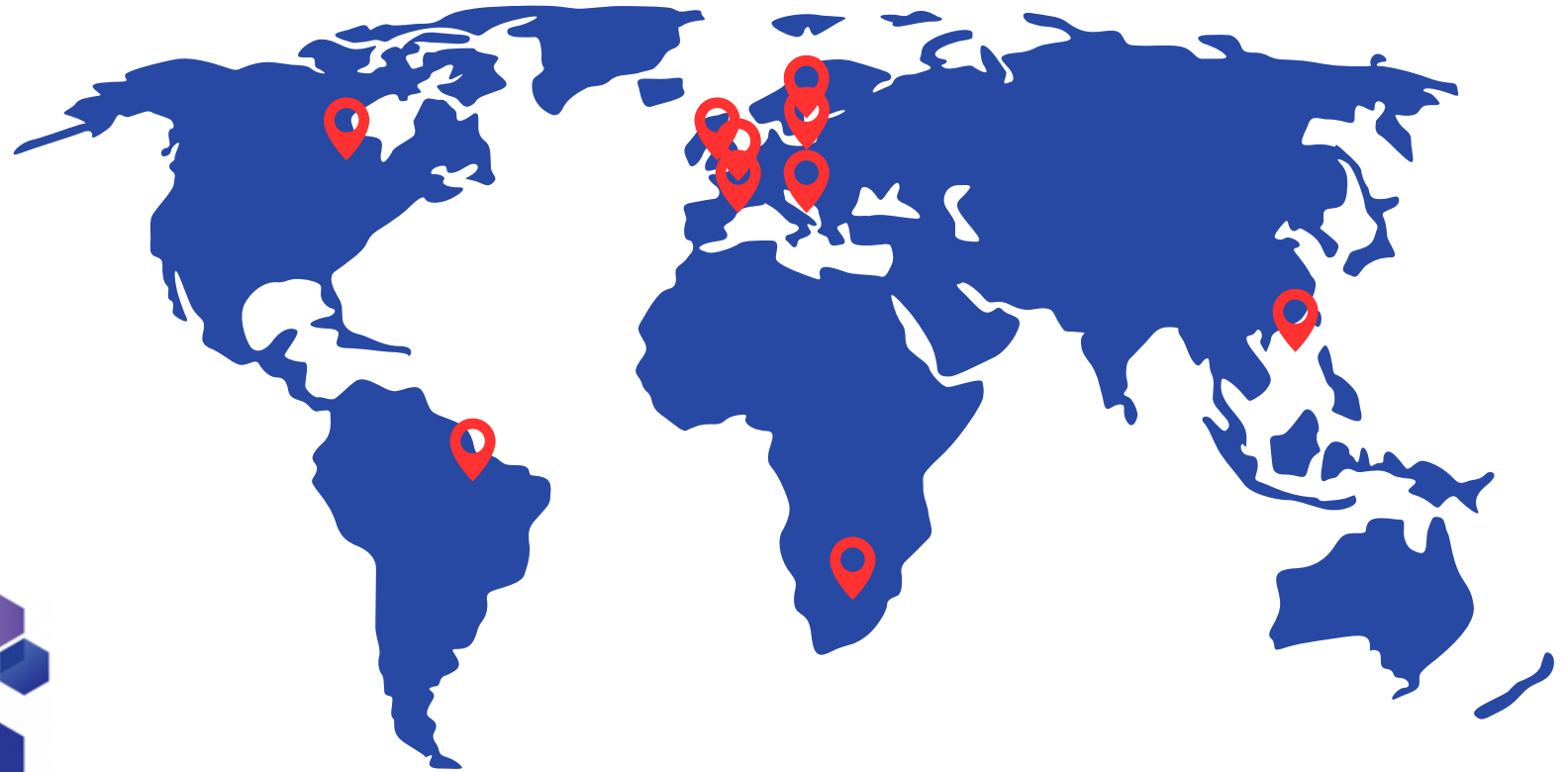
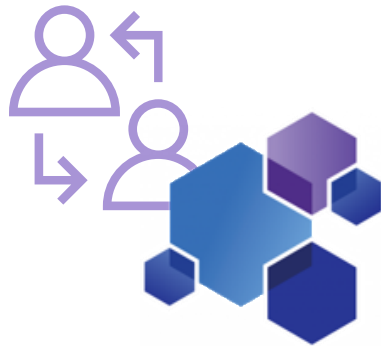
expertise areas

publication of the results



HOW DO WE HANDLE PROJECTS AT FHAI VE

Our project management system expands also to our external collaborations.



- TEAM WORK
- PROJECT MANAGEMENT
- WRITING
- PRESENTING
- SEARCH
- ANALYSIS

MANAGEMENT

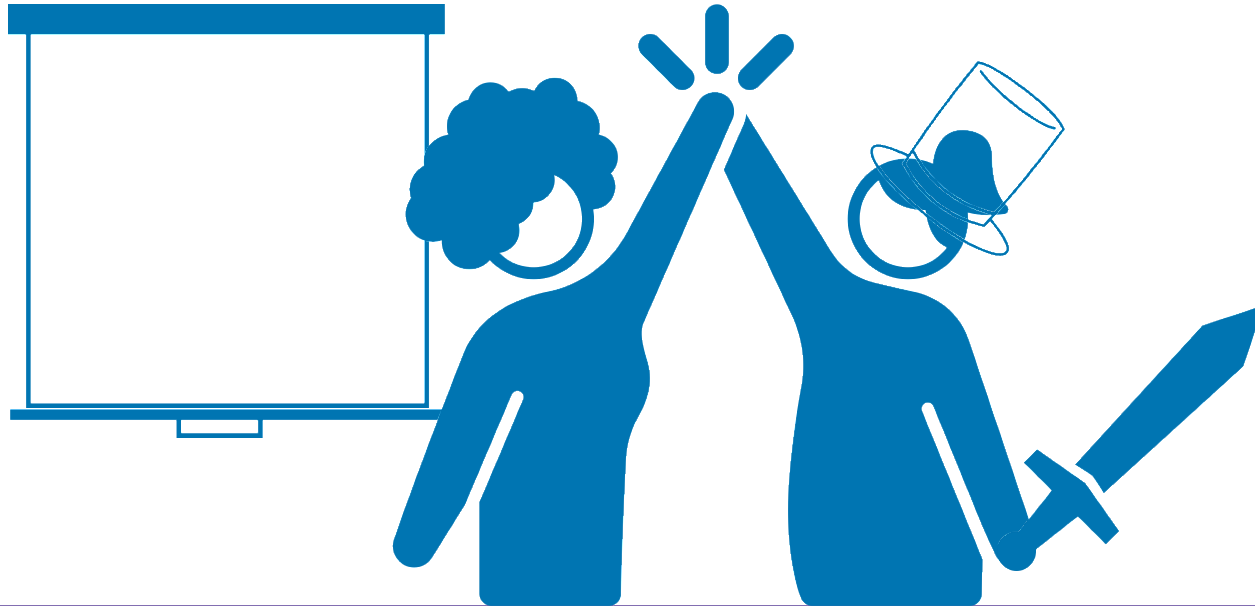
RESEARCH



COMMUNICATION

HOW DO WE SUPERVISE AT FHAI VE ?

A PhD candidate and (a) supervisor should “match”!



A good relationship and a close link with the supervisor's research are associated with fewer quit intentions and more satisfaction

HOW DO WE SUPERVISE AT FHAIVE ?

YOU CAN COUNT ON:



Your supervisor



Post doc(s)



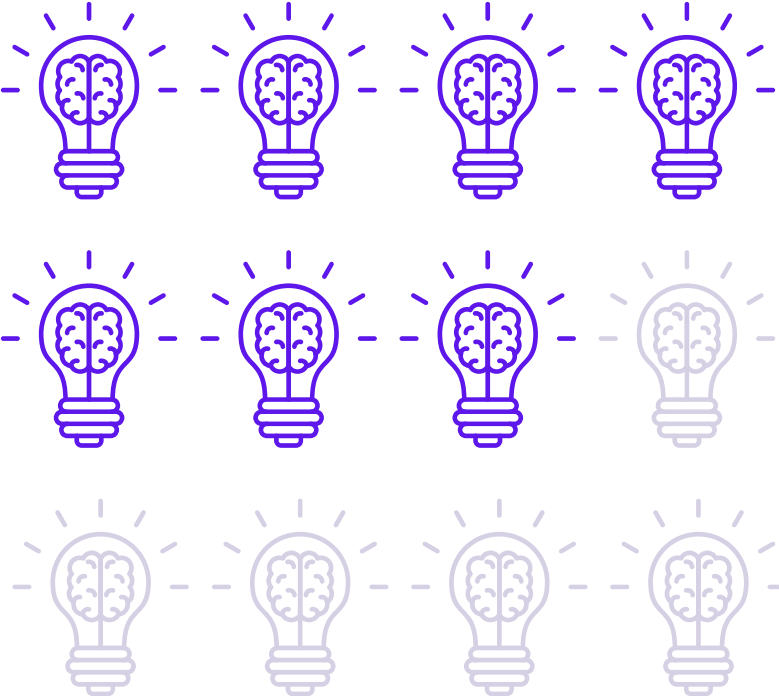
Senior PhD students



Follow-up committee

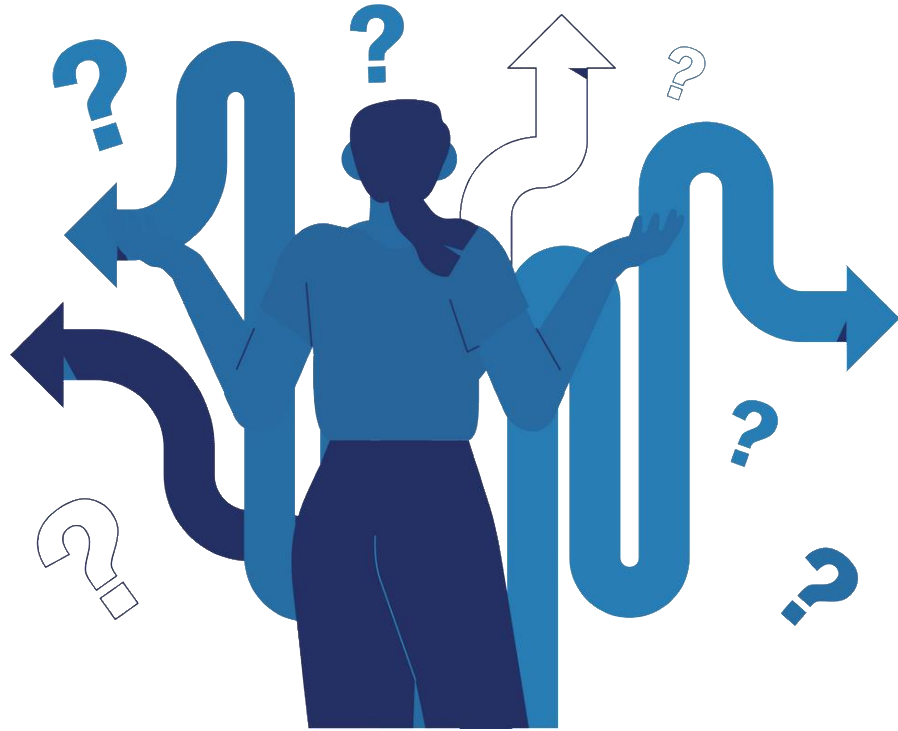


MORE SKILLS



MORE PAPERS

WE KNOW WE ASK A LOT...

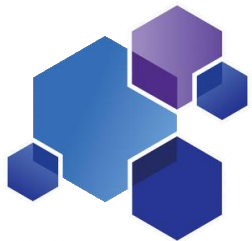


BUT WE ARE HERE FOR YOU!

weekly meetings
dedicated channels
lot of internal support!

A BIG COMMITMENT

Alumni of our lab **survived*
successfully continued their
career either in academia or
company!



MARRIAGE vs. The Ph.D.



Marriage



Ph.D.

Typical Length:	7.5 years	7 years
Begins with:	A proposal	A thesis proposal
Culminates in a ceremony where you walk down an aisle dressed in a gown:	✓	✓
Usually entered into by:	Foolish young people in love	Foolish young people without a job
50% end in:	Bitter divorce	Bitter remorse
Involves exchange of:	Vows	Know-how
Until death do you part?	If you're lucky	If you're lazy

JORGE CHAM © 2010

WE MISSED SOMETHING?

Ask away!

